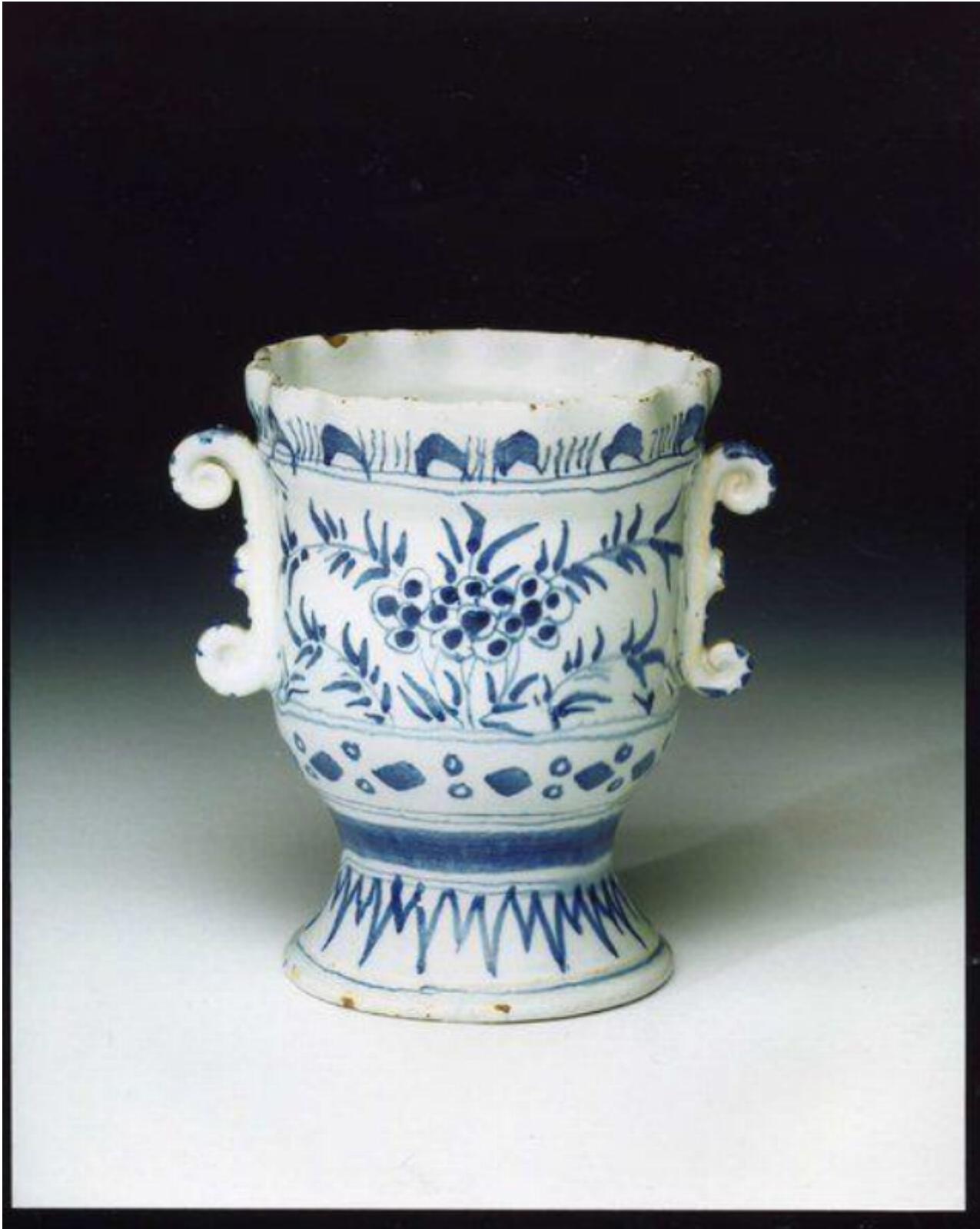


A rare small, mid-18th century, English, delftware, mimosa pattern, vase

Sold



REF: 10577

Description

The everted rim marked with fifteen crimps, each marked with a stiff leaf in the edge with multiple lines interposed. The body of campana shape with coiled strap handles, and painted with a 'mimosa patern' flower cluster front and back. The lower border painted with diamond shapes with pairs of circles interposed, and the foot with rhomboidal brush marks. Decorated in blue on a white glaze. In original condition. Probably Wincanton or Bristol, circa 1740. 21/2064398