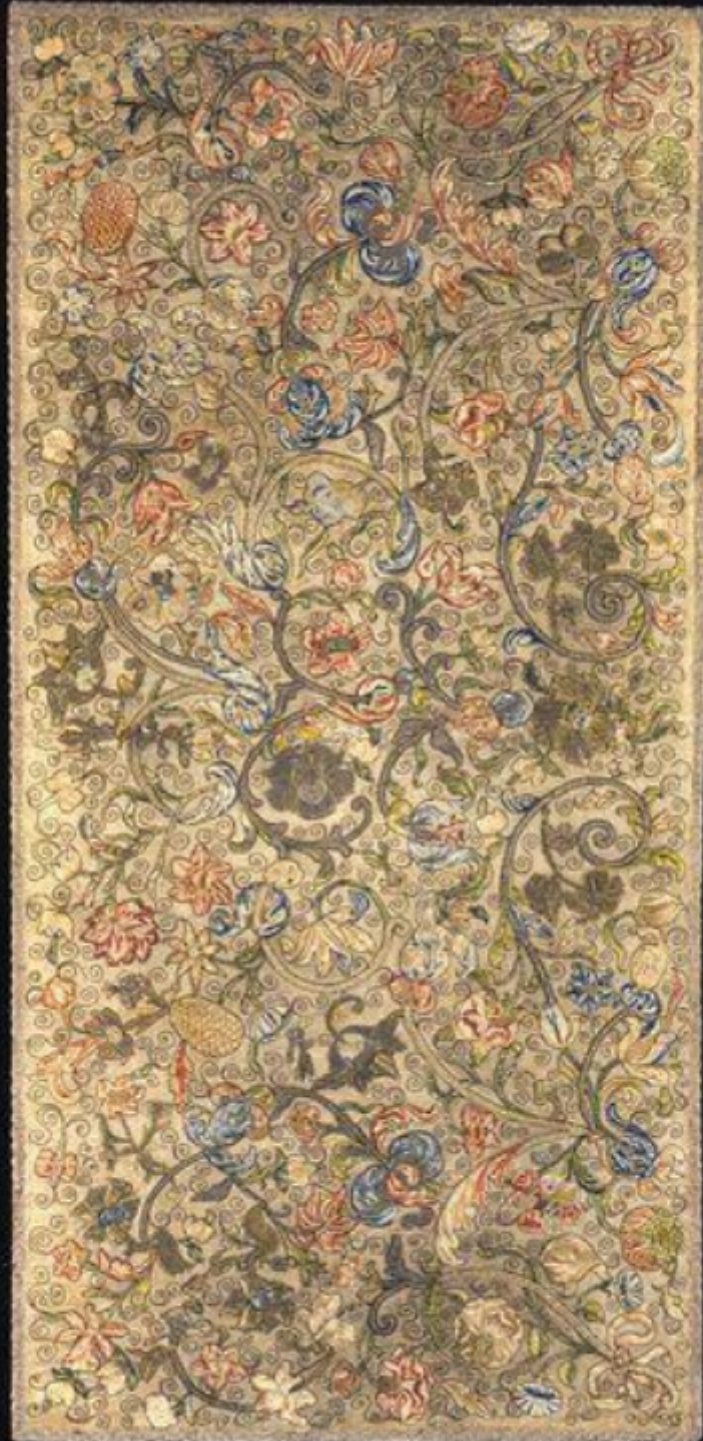


A panel of mid-17th century continental embroidery

Sold



REF: 10605

## Description

The embroidery designed with sprays of tulips, carnations and other flowers, vases and ribbon bows worked in coloured silks and gold and silver thread. Framed and glazed. Probably Italian, second quarter of the 17th century. 2035579

Height: 189.00 cm/76.50 in. Width:

89.00 cm/37.00 in.