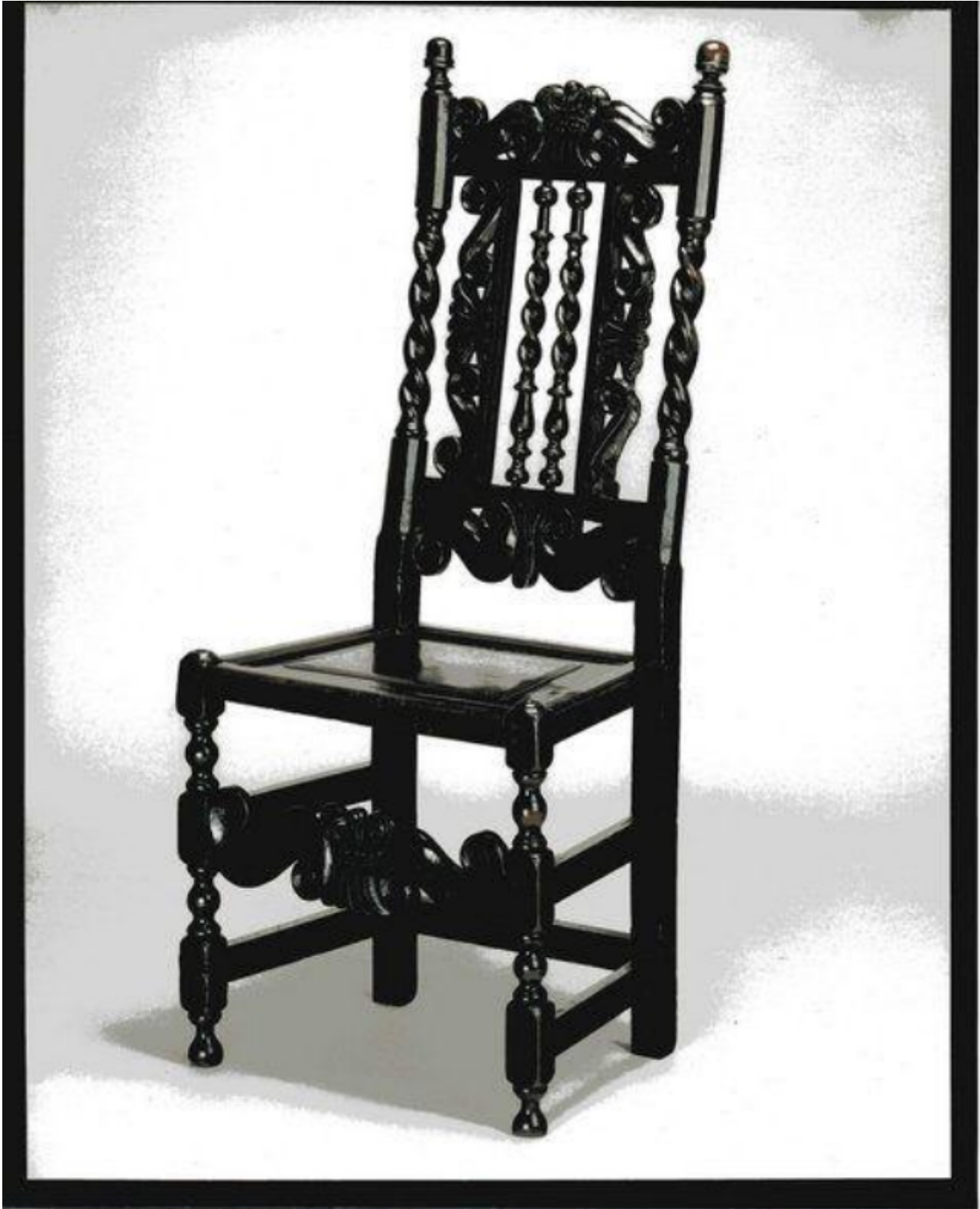


A rare William & Mary, Cherry and Oak Sidechair

Sold



REF: 10450

### Description

CARVED CRESTING WITH BARLEY TWIST UPRIGHTS AND SILHOUETTE WAVY-SHAPED BACK. TRAPEZOID SEAT ON KNOPPED AND TURNED LEGS JOINED BY BARLEY-TWIST AND BALUSTER-TURNED STRETCHERS. EXCELLENT ORIGINAL COLOUR AND PATINATION. ONE REPLACED FINIAL. ENGLISH, CIRCA 1690.