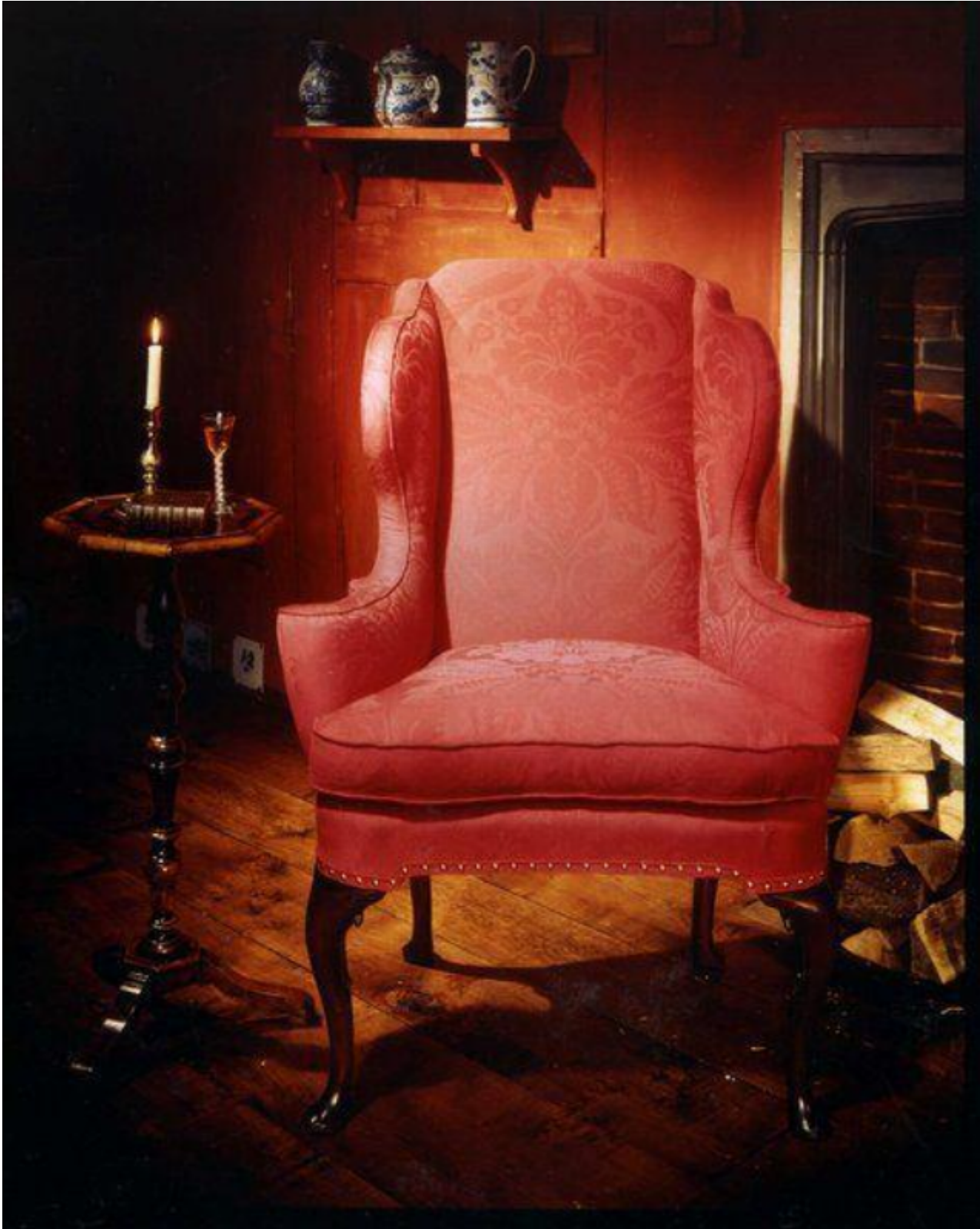


A rare Queen Anne walnut wing armchair

Sold



## Description

upholstered in a crimson wool-damask especially woven and colour-dyed from an original fragment found on the frame.

The back with arched crest flanked by ogival wings and conical out-scrolled arms, with a rare integral "S" scroll, centering a bell-shaped loose-cushioned seat. Original frame re-upholstered by Albert Chapman in a crimson wool damask especially woven by Humphries weaving from a fragment of the original upholstery found on the frame (see photographs). Cabriole legs, the front with "C" scrolls below the knees, and pad feet. Excellent original colour and patination. English, circa 1710. 3085612