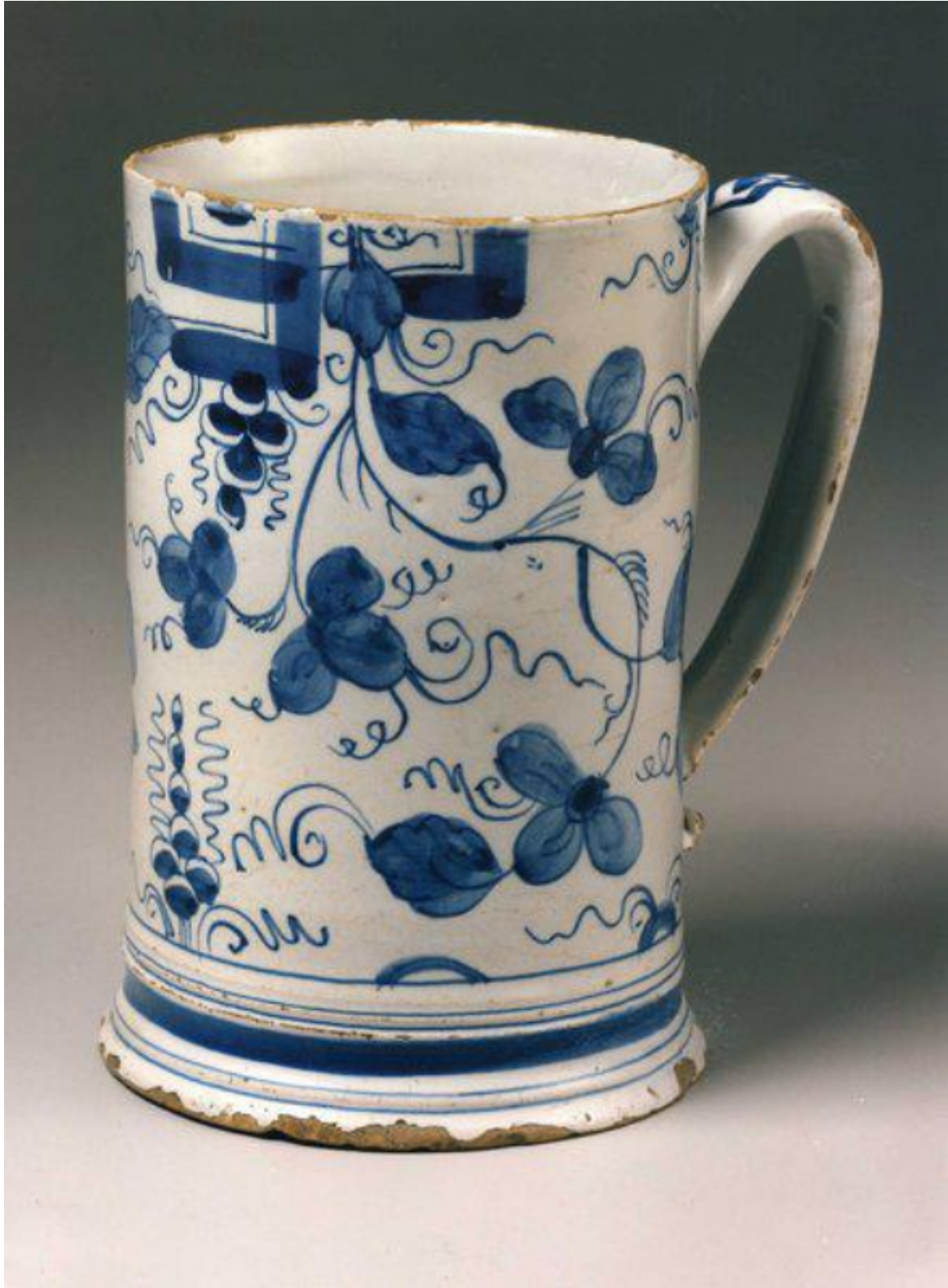


A rare, mid-18th century, English delftware tankard

Sold



REF: 10543

## Description

Decorated with flowers, foliage and trailing stems projecting from a double bracket fence. The oval handle, flattened inside with a tapering tail decorated with interlocking arcs. The base marked with circle borders. Decorated in blue on a white glaze. Restoration to hairline crack. Probably London, second quarter of the 18th century.