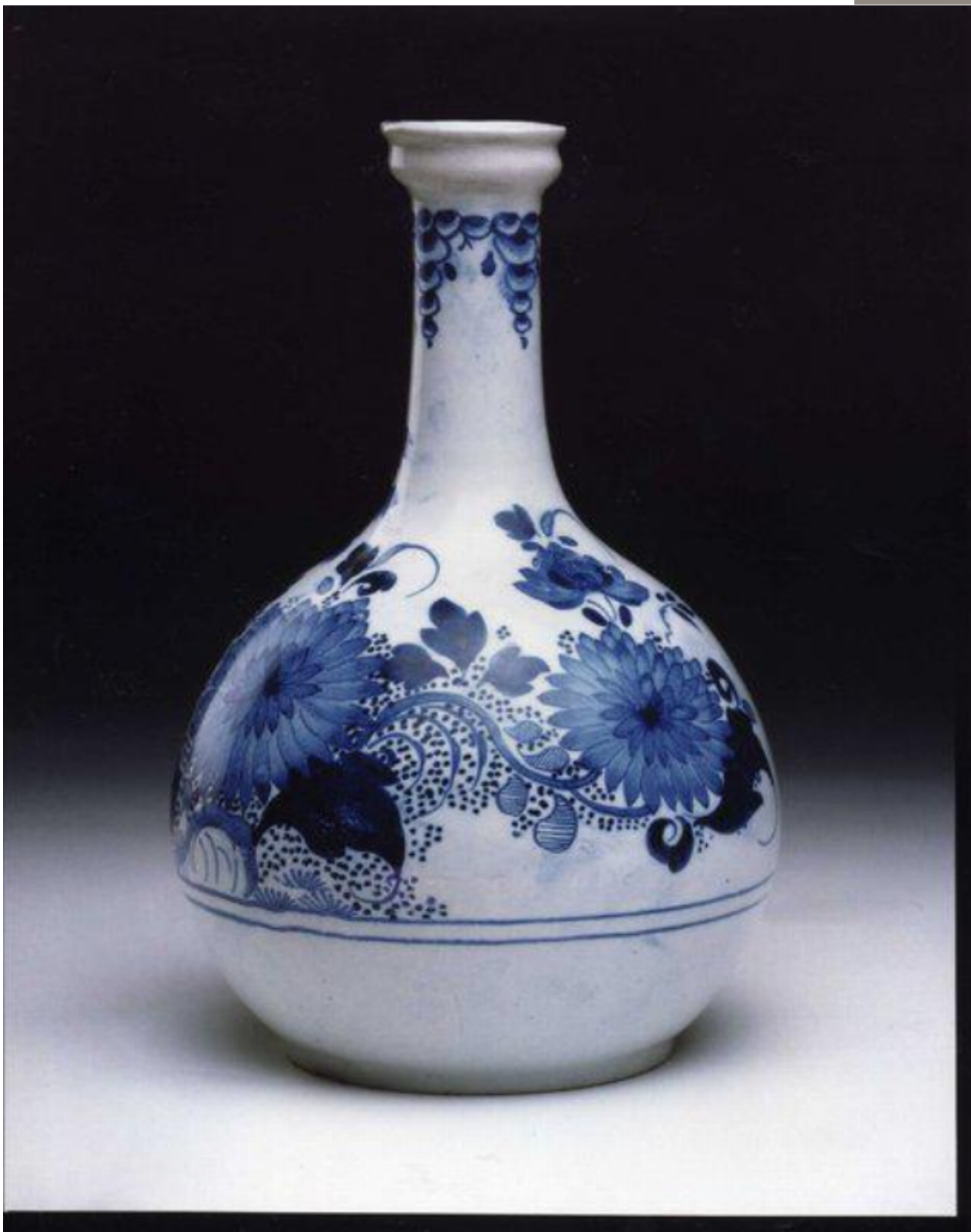


A good, mid-18th century English delftware water bottle

Sold



## Description

A good, mid-18th century delftware water bottle

The everted rim decorated with a stylised border, the shallow, cup-shaped lip above the long stem decorated with chinese symbols. The top of the globular-shaped body decorated with a trellis border, and the main body with three, large, stylised sprays of peony, carnation and chrysanthemum. Decorated in blue on a pale, blue glaze. Restoration to the rim. Probably London, third quarter of the 18th century.

Reference : English Delft (Austin) 595.

Height : 25.00 cm./9.88 in. 5107908