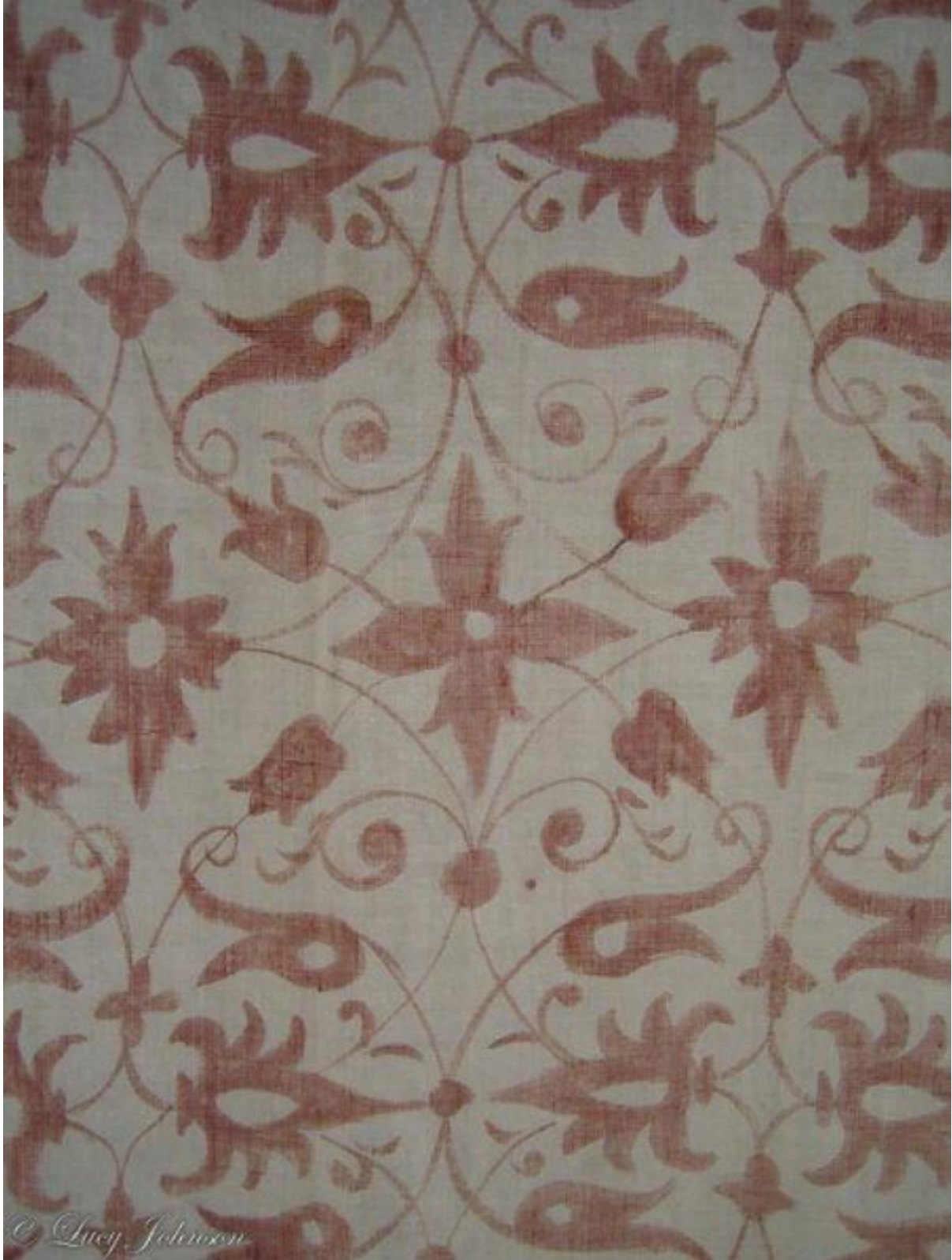


Modern : handpainted, hanging cloth, Saffron Walden Tracery, a mid-16th century design

Sold



## Description

This mid 16th century Renaissance style design was discovered in 1924 in Saffron Walden. The style of design is seen throughout the Elizabethan world and is a beautiful example of Antique Work. What is particularly fascinating is that another house in the same town has an identical frieze which suggests that friezes and fill were interchangeable.