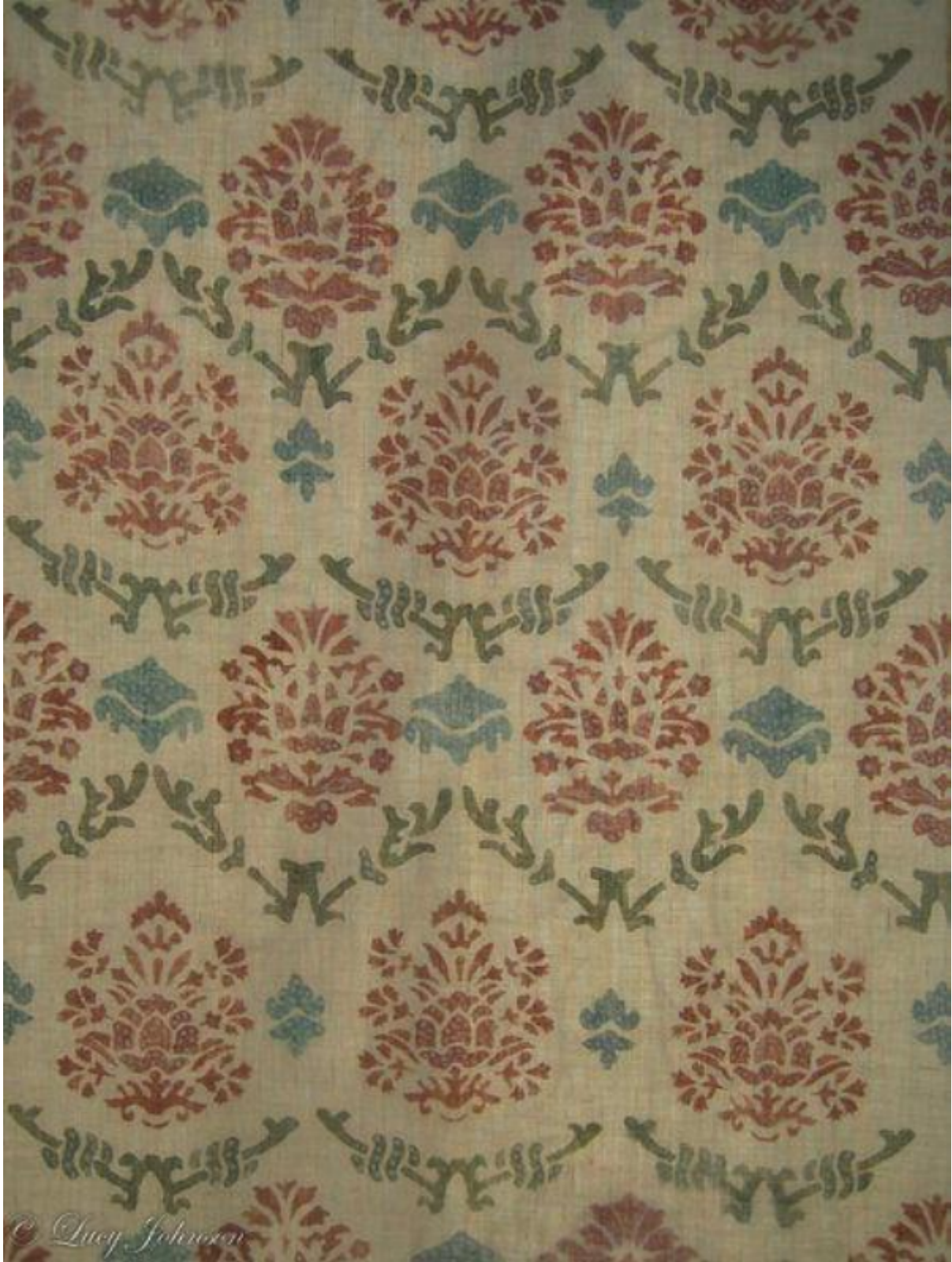


Modern : handpainted, hanging cloth, Pineapple Tree, a 16th century design

Sold



© Lucy Johnson

REF: 10123

Description

Only a tiny fragment of this beautiful stencilled design has been discovered but fortunately this was enough information to accurately reconstruct this fine overall pattern. The motif appears to depict pineapples set amongst foliage with an open trellis repeat.