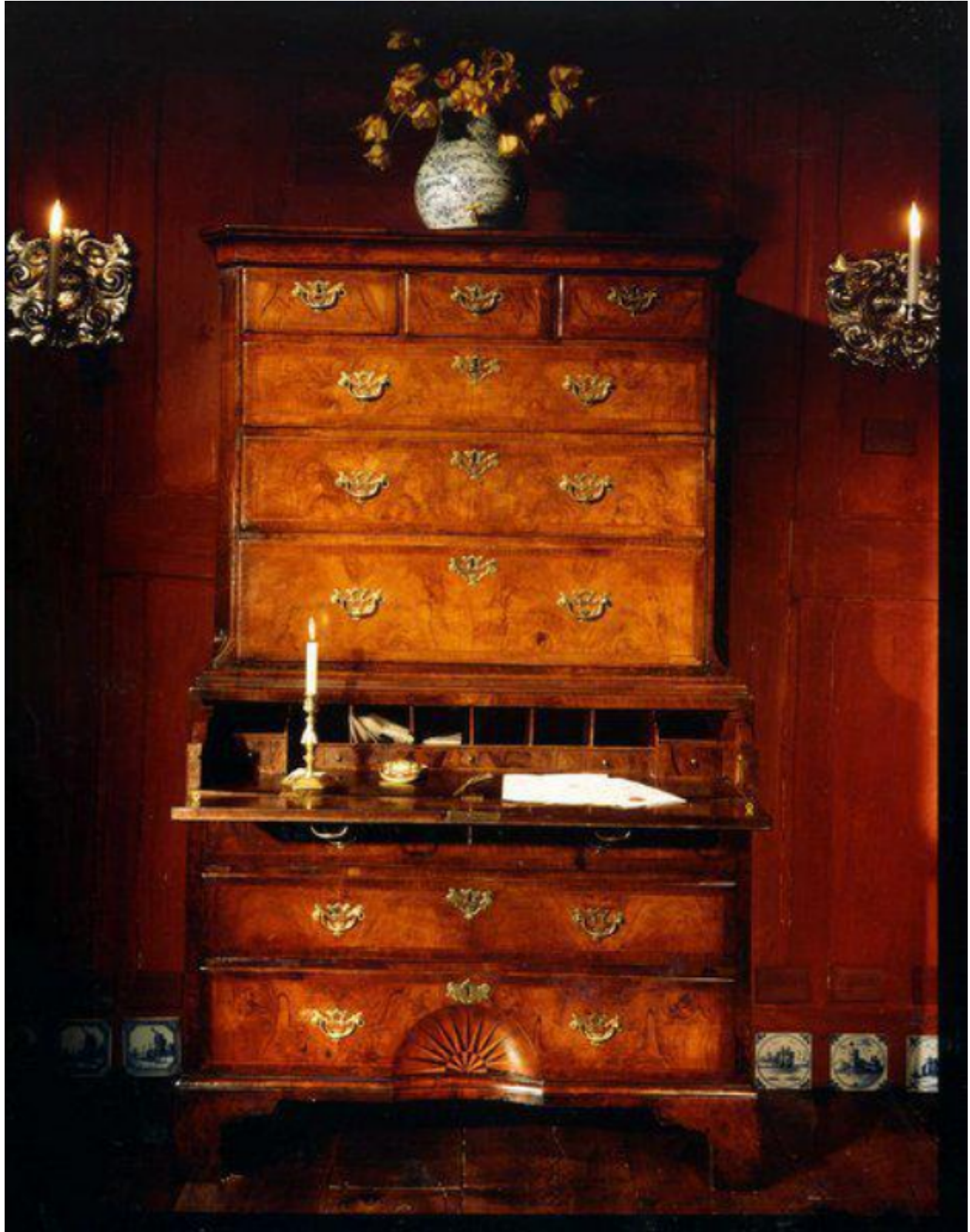


A Rare Queen Anne Walnut-Veneered Sectaire Chest-on-Chest

Sold



REF: 10392

Height: 180 cm (70.9")

Width: 107 cm (42.1")

Depth: 56 cm (22")

## Description

The top with a moulded edge above a cavetto cornice, with canted corners. The top section with three short drawers above three long drawers, all feather and cross-banded. The canted sides decorated with flutings elegantly tapering to a point at the bottom. The bottom section with four long, feather and crossbanded drawers. The top false drawer released by replaced hooks and eyes and lowered on three replaced hinges. The inside fitted as a secretaire with pigeon-holes and drawers. The bottom drawer decorated with an arcaded niche decorated with a fine holly and ebony double-sunburst. Restoration to veneers on cornice and bracket feet, and replaced handles, locks and escutcheons. Excellent original colour and patination. Probably English, circa 1710.